

Application

Upholstery

Content

100% Polyurethane (Polycarbonate Based)

Backing

100% Polyester

Width

54"

Repeat

App. 3" H, 4.5" V

General Characteristics

Abrasion : 500,000+ double rubs (Wyzenbeek)†

Hydrolysis Resistance : 15+ weeks

- ISO1419:1995, Method C, Tropical Test

Colorfastness to light (AATCC-16/200 hours)

Meets or exceeds all ACT Heavy Duty Performance

Guidelines for Upholstery

Flammability

CA Bulletin 117-2013, UFAC/NFPA-260

IMO A652 (16) 8.2

Maintenance

W/S, Bleach Cleanable (10:1)

Options

Graffiti-Free®

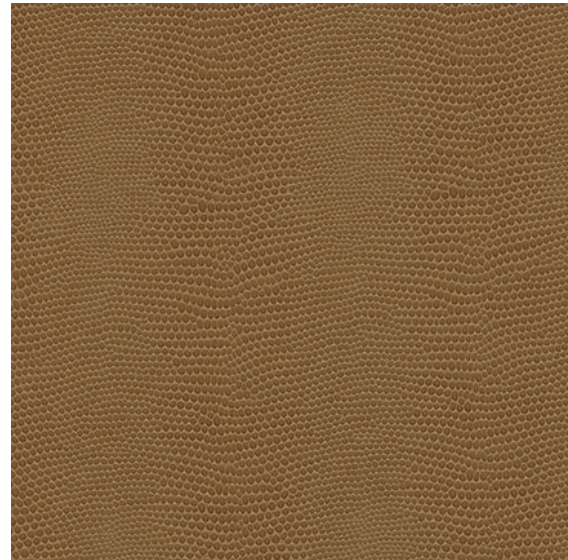
Environmental

DMF Free, PVC/Phthalates Free, FR/Anti-Microbial Free

*Complies with REACH, Prop 65, HHI, CAL 01350

Warranty

Please refer to our Terms of Sales for warranty information.



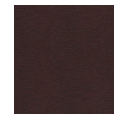
Camel



Cloud



Vanilla



Bordeaux



Slate



Peach



Mica



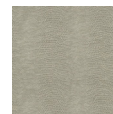
Rust



Marine



Acorn



Porcelain



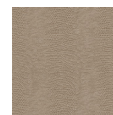
Teakwood



Ebony



Moss



Putty

† Multiple factors affect fabric durability and appearance retention, including end-user application and proper maintenance. Wyzenbeek results above 100,000 double rubs have not been shown to be a reliable indicator of increased fabric lifespan.